

Atlas Copco



# PAC Flow series

[atlascopco.com](http://atlascopco.com)



# We are driven by innovation


# 1

## Best in class performance

- Up to 82% pump efficiency at B.E.P. for more pumping with same required energy
- Reduced pump shaft speed for improved NPSHR and reduced wear of pump parts
- Up to 50cfm vacuum pump capacity to prime faster and get the job done quicker
- Unique enclosed impeller design with deflector vanes keeps Seal always clean and reduces wear for long lasting performance
- High fuel efficiency (FT4)



Priming nearly twice as quick as PAS





<p><b>UNIQUE DEFLECTOR VANES</b></p> 	<p><b>3 TIMES LONGER SEAL LIFE</b></p> 	<p><b>UP TO 82% EFFICIENCY AT B.E.P.</b></p> 
---	--	---

# We deliver sustainable value

# 3

## Technology that creates a difference

- Two new pump controller solutions for efficient pumping and solving wide range of applications
- All Info a QR Code Scan Away! – Power Connect!
- Digitally connected - Fleetlink
- Cross-linked PE fuel cell – No oxidation inside the tank and safe for life

<p>Rust free polyethylene fuel tank</p> 	<p>Next generation pump controller</p> 
<p>CONNECTED <b>FLEET LINK</b> SECURED</p> 	<p>Power connect a scan away</p> 

# We focus on creating partnerships

# 2

## A new level of Serviceability

- Service time reduction with the Atlas Copco SAIL Solution the revolutionary cartridge seal
- Bolted wear ring for fast replacement and no special tool requirement
- Patented swing door (except F1212) to access the pump within minutes
- Large doors to access all service points
- Fluid drain points for save and trouble free service

<p>UNDER <b>60</b> MINUTES SERVICE TIME</p> 	<p><b>HINGE DOOR 3 MIN</b> CLEAN-UP AND RESTART</p> 	<p>UP TO <b>30% REDUCED M.T.T.R.</b></p> 	<p><b>SAIL</b> Solution</p> 
---	---	---	---

## Mechanical Seal Patent and Trademark. Products - PAC H and PAC F.

<b>S</b>	Semi Cartridge Seal	Serviceability	
<b>A</b>	Adjustable Ring	Performance	
<b>I</b>	Integrated oil bath	Lifespan	
<b>L</b>	Leakage Detection Port	Safe and secured	





# PAC Flow series



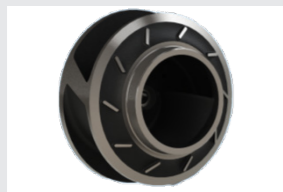
## HEAVY DUTY VACUUM PUMP

Provides high performance priming result with all media



## SUPERIOR SERVICEABILITY

Reduce M.T.T.R



## MECHANICAL SEAL OIL BATH

Extended dry running capability

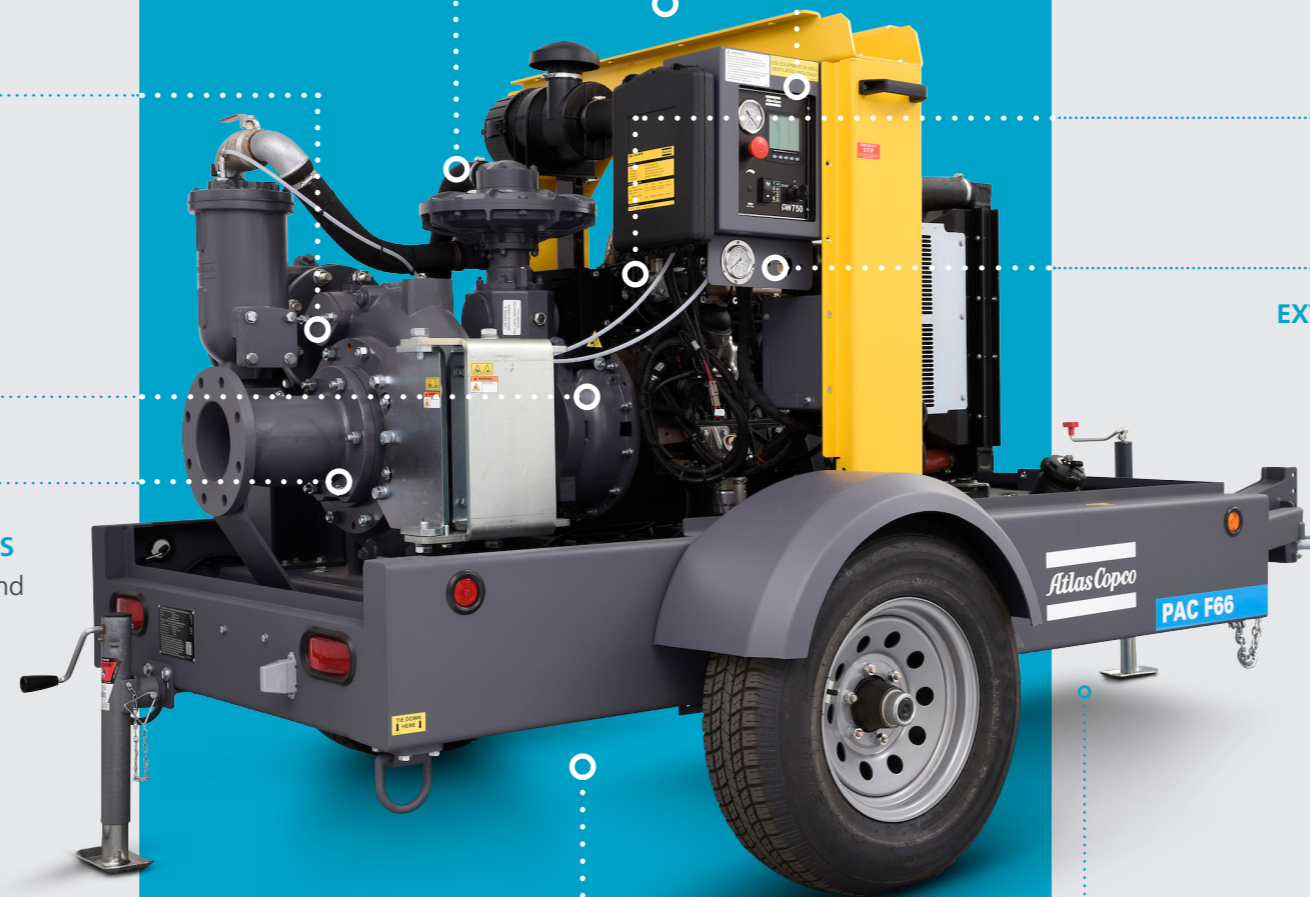
## UNIQUE IMPELLER DEFLECTOR VANES

Innovative design to extend Seal life and reduce wear



## EASY DRAIN ACCESS FOR PUMP

Easy access and maintenance



## INTEGRATED LIFTING HOOK / LUG

Simple access and safe lifting



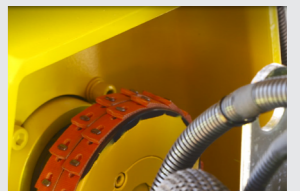
## PW CONTROLLER SERIES

Efficient pumping in every application



## LINK BELT DESIGN

Quick maintenance



## EXTERNAL E-STOP AND PRESSURE GAUGES

Protected and always in control



## CROSS-LINKED PE FUEL CELL

No tank oxidation and safe

UP TO  
**30%**  
REDUCED  
M.T.T.R.



**SAIL** Solution

**3 TIMES  
LONGER  
SEAL LIFE**

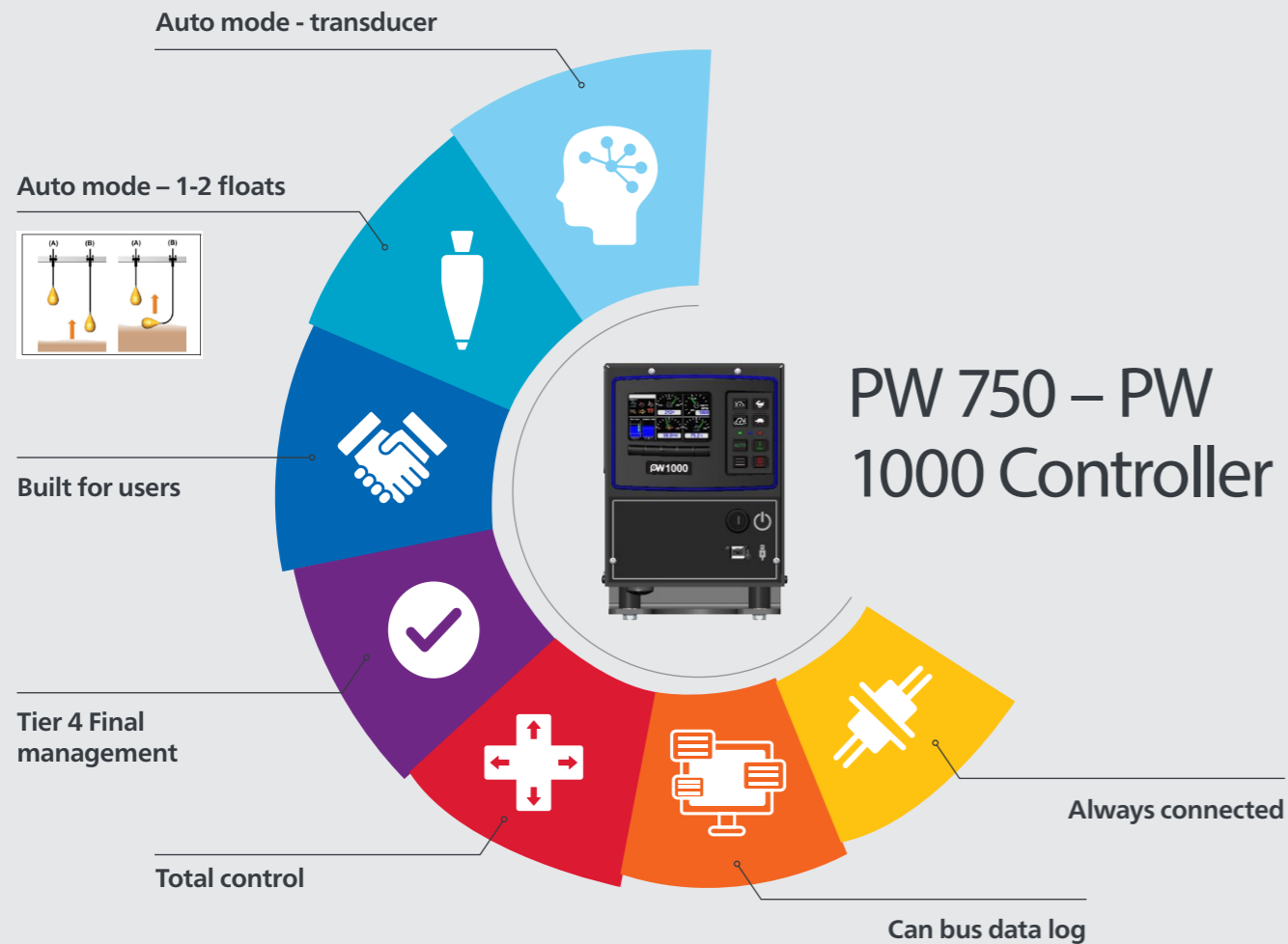


NEXT  
GENERATION  
PUMP  
CONTROLLER



**MAX  
FLOW** →  →  
UP TO **8,600** USgpm

**MAX  
HEAD UP  
TO 225 FT** ↑ 



## PAC Flow series technical data

Specifications		PAC F66 KD(-S) 74HP	PAC F88 PD(-S) 120HP	PAC F1212 JD-S 156HP	PAC F1212 VD(-S) 285HP
Max. head	ft	166	200	153	225
Max. capacity	Us gpm	2,640	3,950	7,210	8,600
Suction flange size	in	6	8	12	12
Discharge flange size	in	6	8	12	12
Max. solids handling	in	3	3	3.5	3.5
Best efficiency point	%	79	82	74	74
Engine Make		Kohler KDI 2504 TCR	Perkins 904J-E36TA	John Deere 4045HFC06	Volvo TAD 872 VE
Emission compliance		FT4	FT4	FT4	FT4
Max. engine power	HP	74	120	156	285
Max. operating speed	rpm	1800	2000	1900**	1600
Max. fuel autonomy	h	25.7	18.5	25.6	8.8
<b>Weight and dimensions</b>					
Weight (dry)	lbs	3,740 (4,020*)	4,530 (4,950*)	8,460*	8,160 (9,480*)
Weight (wet)	lbs	4,100 (4,650*)	5,200 (5,580*)	9,975*	9,260 (10,580*)
Length	in	157	165	149	128 (158*)
Width	in	78	76	82	76 (94*)
Height	in	74	80	89	85 (79*)

\* Silenced variant | \*\*Engine speed

## Controller matrix



	PW750	PW900	PW1000
Manual	X	X	X
Auto start	X	X	X
Real time schedule start/stop		X	X
<b>Autostart Features:</b>			
Switches (floats)	2	2	2
4-20 mA transducers	1	2	6
Date/time		X	X
Flow meter (pulse or 4 - 20 mA)	4-20 mA	4-20 mA	Both
Switched inputs	2	2	8
Spare switched outputs	2	3	8
Modbus	Slave		Slave
USB programming/configuration		X	X
Built in CANbus trace tool		X	X
Display	4.3" mono	high res 3.5" QVGA color	high res 4.3" WQVGA color

### Highlights

- Supports (2) transducer and dual floats
- Throttle to Level, Pressure or Flow
- Configurable throttle profiles
- Real Time clock supports 7D/24H Scheduler

### Flexible Programming and Configuration

- Supports software updates and configuration changes via USB drive and complete access to all configurable parameters via display menu.
- Password protected multi-level menu access.

### PW900 Controller



### Highlights

- High-Res 4.3" WQVGA color display
- Powered by CANplus™RT software
- Simplified one-touch access
- Intuitive event manager

### Flexible Programming and Configuration

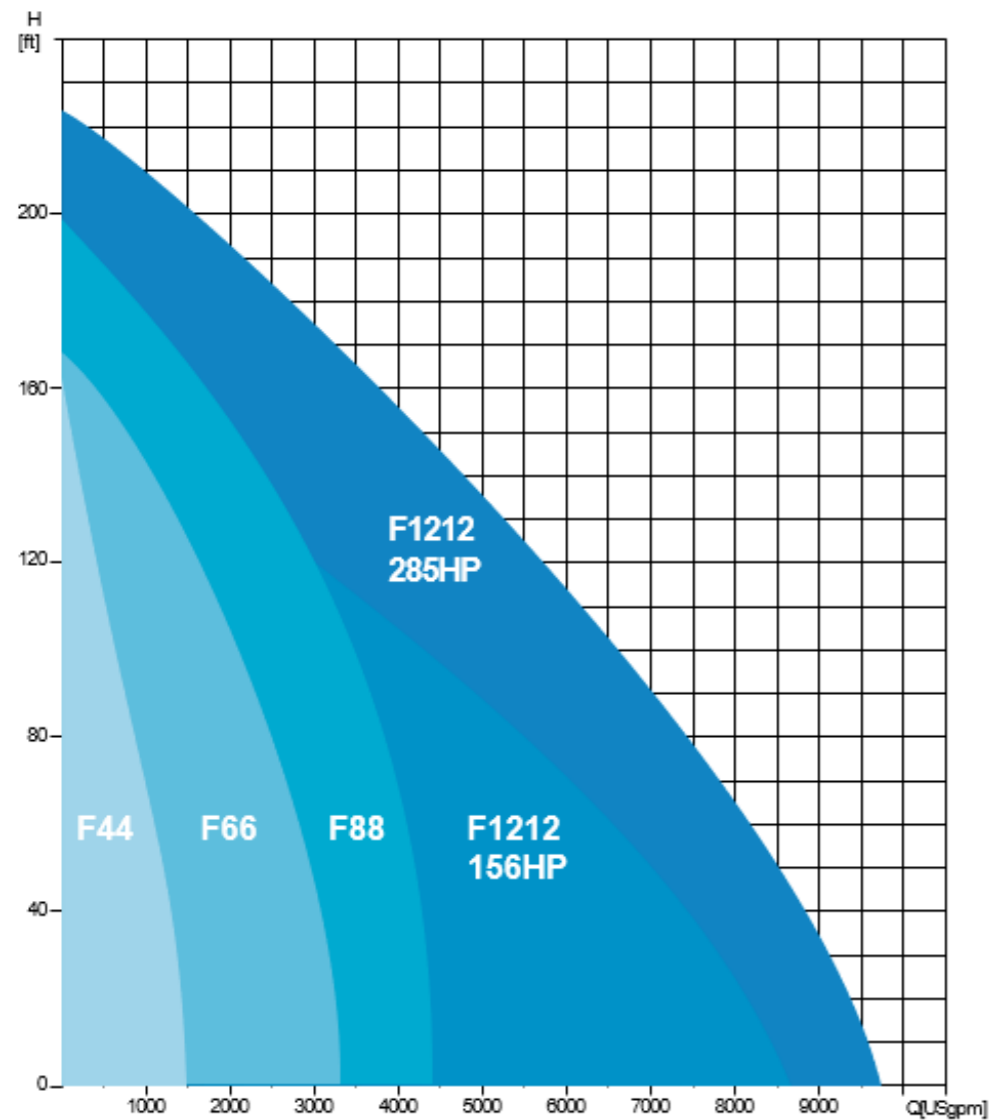
- Supports software updates and configuration changes via USB drive and complete access to all configurable parameters via display menu.
- Password protected multi-level menu access.

### PW1000 Controller





# Operation area



# Product portfolio

## GENERATORS

**PORTABLE**  
1.6-7 kVA



**MOBILE**  
25-1450 kVA



\*Multiple configurations available to produce power for any size application

## DEWATERING PUMPS

**ELECTRIC SUBMERSIBLE**  
up to 6,100 US gpm



**SURFACE PUMPS**  
up to 8,600 USgpm



Diesel and electric options available

## LIGHT TOWERS

**METAL HALIDE**



**LED**



## AIR COMPRESSORS AND HANDHELD TOOLS

**AIR COMPRESSORS**  
110-1,800 cfm  
58-508 psi



**HANDHELD TOOLS**  
Pneumatic  
Hydraulic  
Petrol engine driven



## ONLINE SOLUTIONS

### SHOP ONLINE PARTS ONLINE

Find and order the spare parts for power equipment. We handle your orders 24 hours a day.



### POWER CONNECT

Scan the QR code on your machine, and go to the QR Connect Portal to find all the information about your machine.



### LIGHT THE POWER YOUR SIZING TOOL

A useful calculator to help you choose the best solution for your power and light needs



### FLEETLINK

Intelligent telematics system that helps optimize fleet usage, reduce maintenance costs, ultimately saving time and cost.

