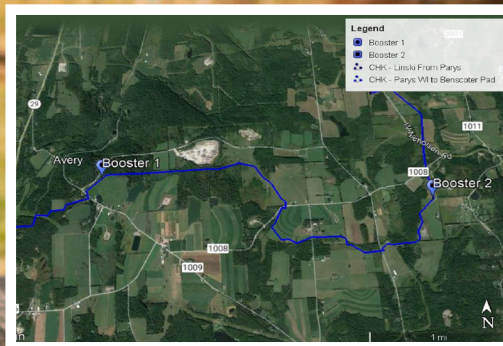
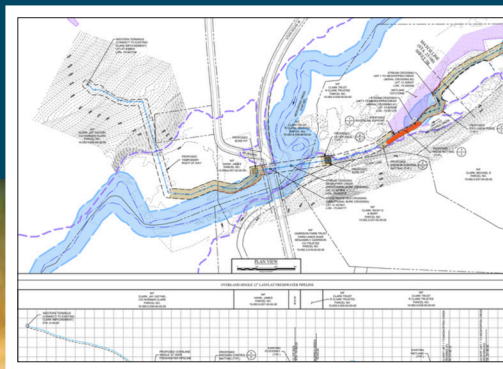


# Water Transfer and Pipeline Design-Build Capabilities



## Our comprehensive services include:

- Pipeline Engineering & Design
- Right-of-Way Acquisition Services
- Environmental Permitting (stream, wetland, road crossing and avoidance)
- Route Surveying
- Temporary Pipeline Installation
- System Operation & Maintenance
- WaterForce Automated Control Systems

We offer turn-key solutions for your entire temporary pipeline project. Prior to mobilization, we will develop a Piping & Instrumentation Drawing (P&ID) for each water transfer set-up, which illustrates the complete pump, piping, and valve set-up at each location. Keystone has developed this customized design service for its customers to maintain Keystone's Quality Assurance Program and Safe-Operating requirements. From pre-job planning to execution, we will design and complete the construction and operation of your complex waterline project with ease.

**Contact us today for all your temporary above-ground waterline needs.**



[keystoneclear.com/design-build](http://keystoneclear.com/design-build)

Matt King | 717-508-0550 | [mking@keystoneclear.net](mailto:mking@keystoneclear.net)